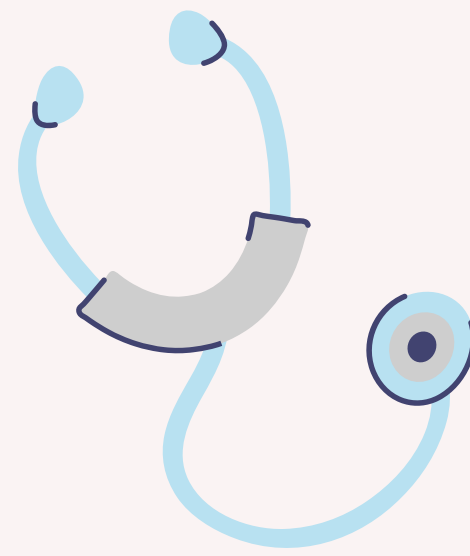




Fomepizole Clinical Pearl

Seth Carroll, PharmD
PGY2 Emergency Medicine
Froedtert & the Medical College of Wisconsin

Patient Case



- Self harm ingestion of antifreeze
- Somnolent
- Initial vital signs WNL
- CMP
 - Bicarb of 13
- pH of 7.3
- Osmolar gap of 26



Ethylene Glycol Metabolism

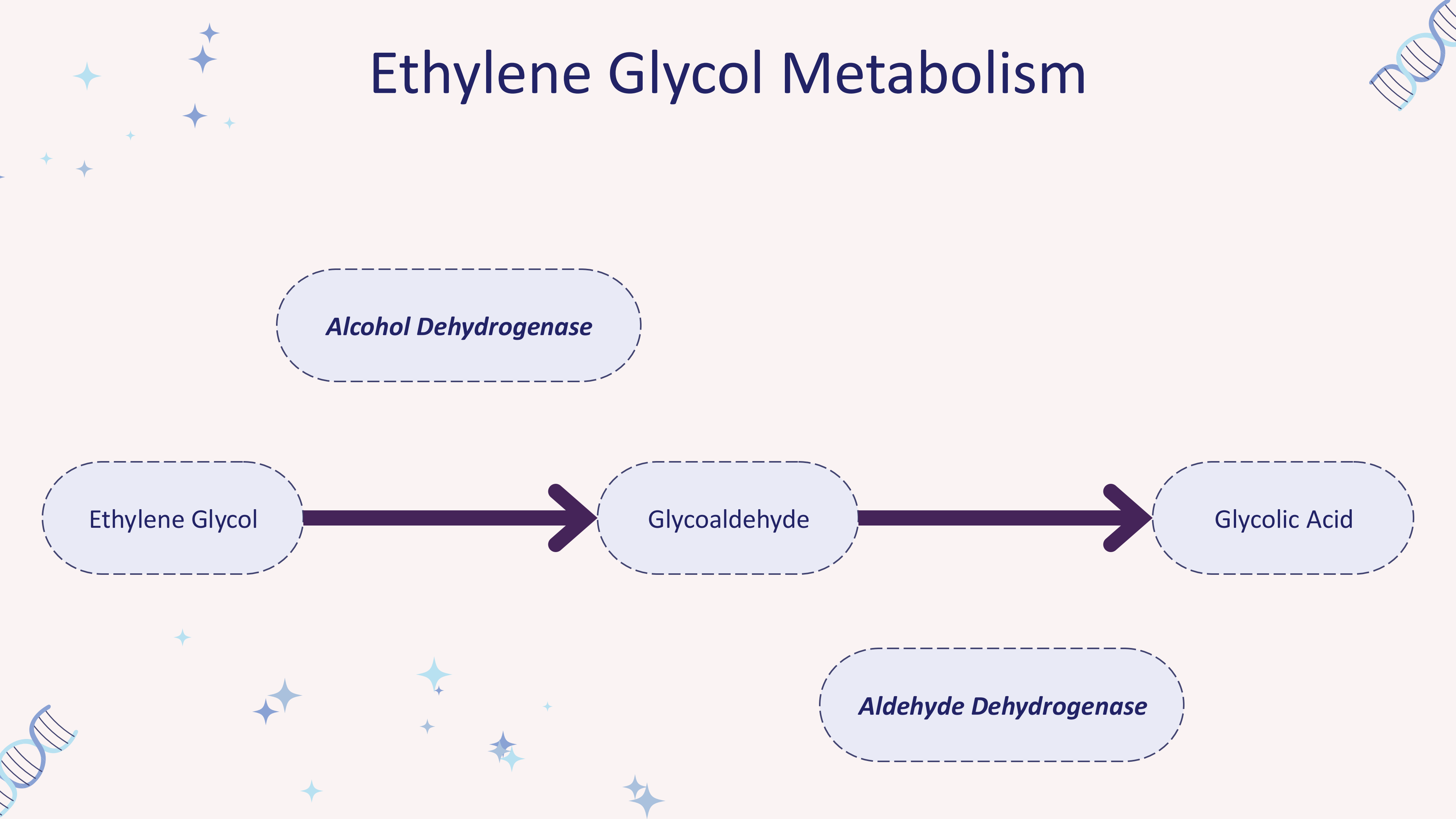
Alcohol Dehydrogenase

Ethylene Glycol

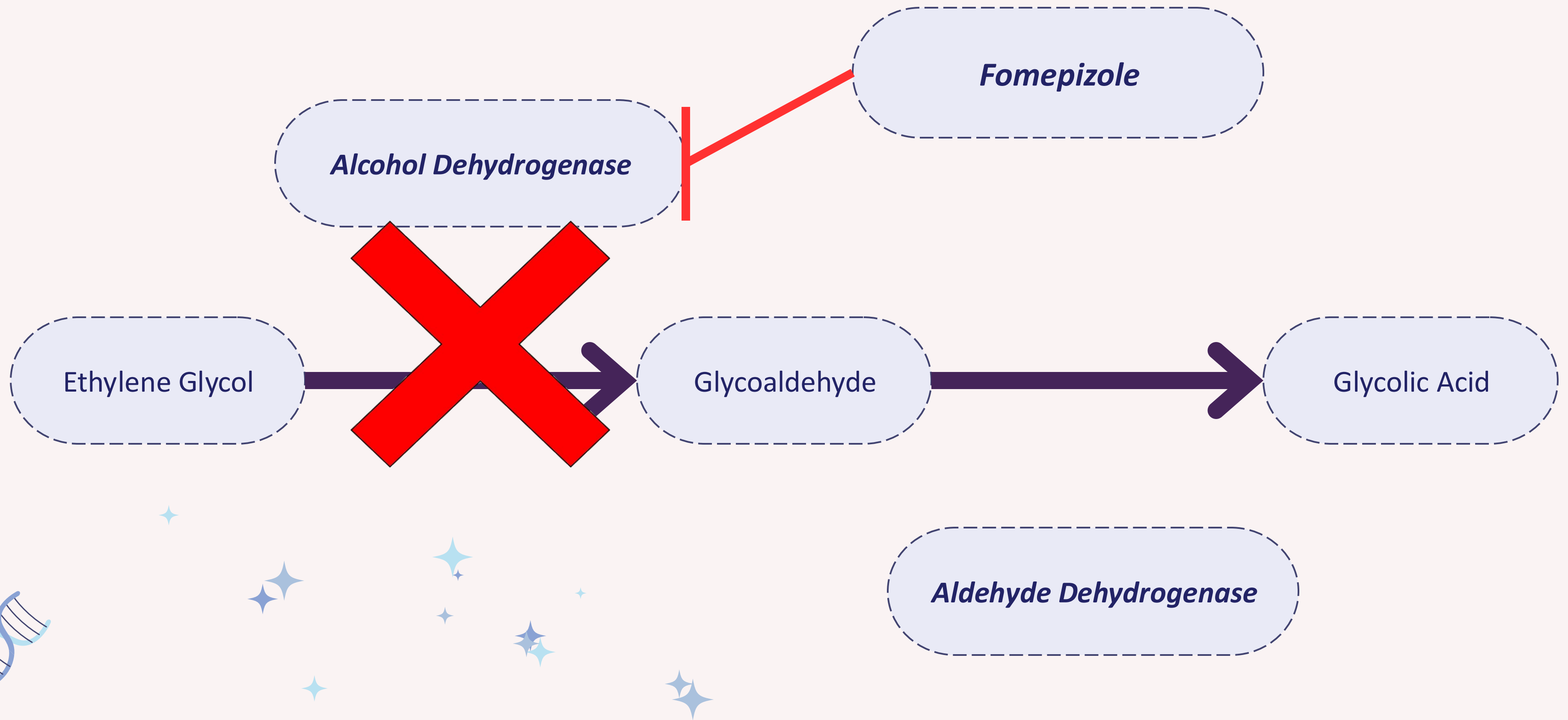
Glycoaldehyde

Glycolic Acid

Aldehyde Dehydrogenase



Fomepizole Mechanism



Fomepizole Dosing

Loading Dose

- 15mg/kg diluted into 100mL of NS or D5
- Infused over 30 minutes

Maintenance Dose

- 10mg/kg every 12 hours for 4 doses
- Then increase to 15mg/kg every 12 hours

Hemodialysis Dosing

- Administer at the start of hemodialysis if last dose was >6 hours
- Continue dosing every 4 hours during dialysis

CRRT Dosing

- No formal guidance
 - A single study suggest dosing every 8 hours

Fomepizole Clinical Pearls

- Fomepizole has been given orally if IV access isn't available
 - Poor taste, may mix with vegetable juice

- Fomepizole may solidify at temperatures $<25^{\circ}$ Celsius
 - Pass under warm water or warm in hands

- Fomepizole may have a role in acetaminophen toxicity, and disulfiram-ethanol reactions
 - Awaiting more clinical data

- Minimal side effects
 - Transient bump in LFTs
 - Burning at infusion site
 - Headache

- Easier pharmacokinetic profile
 - No therapeutic level monitoring





Fomepizole Clinical Pearl

Seth Carroll, PharmD
PGY2 Emergency Medicine
Froedtert & the Medical College of Wisconsin